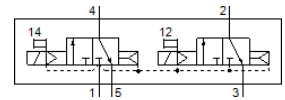
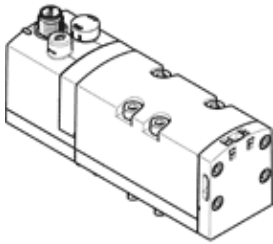


# solenoid valve

## VSVA-B-T32C-AD-D1-1R5L

Part number: 561359

FESTO



## Data sheet

Feature	Value
Valve function	2x3/2 closed, monostable
Type of actuation	electrical
Width	42 mm
Standard nominal flow rate	1,100 l/min
Operating pressure	3 ... 10 bar
Design structure	Piston slide
Type of reset	Air spring
Authorisation	c CSA us (OL) c UL us - Recognized (OL)
Protection class	IP65 NEMA 4
Nominal size	11 mm
Grid dimension	43 mm
Exhaust-air function	throttleable Via throttle plate Via individual sub-base
Sealing principle	soft
Assembly position	Any
Conforms to standard	ISO 5599-1
Manual override	detenting Pushing
Type of piloting	Piloted
Pilot air supply	Internal
Flow direction	non reversible
Overlap	Positive overlap
Signal status display	LED
Flow rate of valve	1,600 l/min
Flow rate of valve on individual sub-base	1,200 l/min
Flow rate of pneumatically linked valve	1,100 l/min
Switching time off	38 ms
Switching time on	20 ms
Duty cycle	100 %
Max. positive test pulse with logic 0	1,600 µs
Max. negative test pulse with logic 1	1,100 µs
Characteristic coil data	24 V DC: 1.3 W
Permissible voltage fluctuation	+/- 10 %
Operating medium	Compressed air in accordance with ISO8573-1:2010 [7:4:4]
Note on operating and pilot medium	Lubricated operation possible (subsequently required for further operation)
Vibration resistance	Transport application test at severity level 2 in accordance with FN 942017-4 and EN 60068-2-6
Shock resistance	Shock test with severity level 2 in accordance with FN 942017-5 and EN 60068-2-27
Corrosion resistance classification CRC	0 - No corrosion stress
Medium temperature	-5 ... 50 °C
Relative air humidity	0 - 90 %

Feature	Value
Pilot medium	Compressed air in accordance with ISO8573-1:2010 [7:4:4]
Ambient temperature	-5 ... 50 °C
Product weight	442 g
Electrical connection	Central plug Round design M12x1 3-pin
Mounting type	On sub-base
Pneumatic connection, port 1	Connection plate size 1 as per ISO 5599-1
Pneumatic connection, port 2	Connection plate size 1 as per ISO 5599-1
Pneumatic connection, port 3	Connection plate size 1 as per ISO 5599-1
Pneumatic connection, port 4	Connection plate size 1 as per ISO 5599-1
Pneumatic connection, port 5	Connection plate size 1 as per ISO 5599-1
Materials note	Conforms to RoHS
Material seals	FPM HNBR NBR
Material housing	Aluminium die cast PA
Material screws	Steel Galvanised